

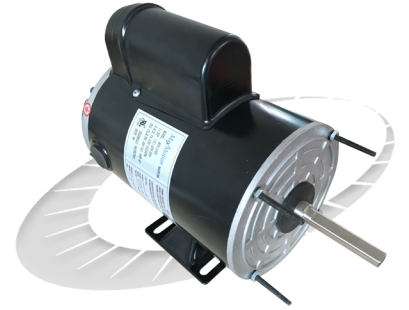
FARM DUTY PSC MOTOR

TEAO TOTALLY ENCLOSED AIR OVER DESIGN
VARIABLE SPEED CONTROLLED 1 PHASE INPUT



Applications:

Designed for demanding agricultural fan applications such as poultry houses and barn exhaust fan. Must be mounted within the airstream for proper cooling. Variable speed capabilities when used with single phase speed control unit.



Features:

Design - Extended thru-bolts, fully gasketed and 1/2" dia x 2-1/2" long shaft with one flat

Paint - Black Enamel Paint

Agency Listings and Standard - NEMA, CSA Certified and UL Recognized

Electrical Supply - 115/230VAC, 60Hz

Mounting - 48 and 56 frame mounting holes

Service Factor - 1.0

Protection - Automatic reset thermal protector

Bearings - Ball Bearings.

Frame Construction - Rolled Steel with cast aluminum end shields

Warranty - 1 year

| HP | FL RPM | VOLTS | FRAME | CAT NO. | F.L. AMPS | WT (Lbs) | "C" Dimension (Inch) |
|------|--------|---------|-------|-----------|-----------|----------|----------------------|
| 0.33 | 1625 | 115/230 | 48YZ | MVS-134SB | 3.8/1.9 | 22.15 | 11.81 |
| 0.5 | 1625 | 115/230 | 48YZ | MVS-124SB | 5.4/2.7 | 24.4 | 11.81 |